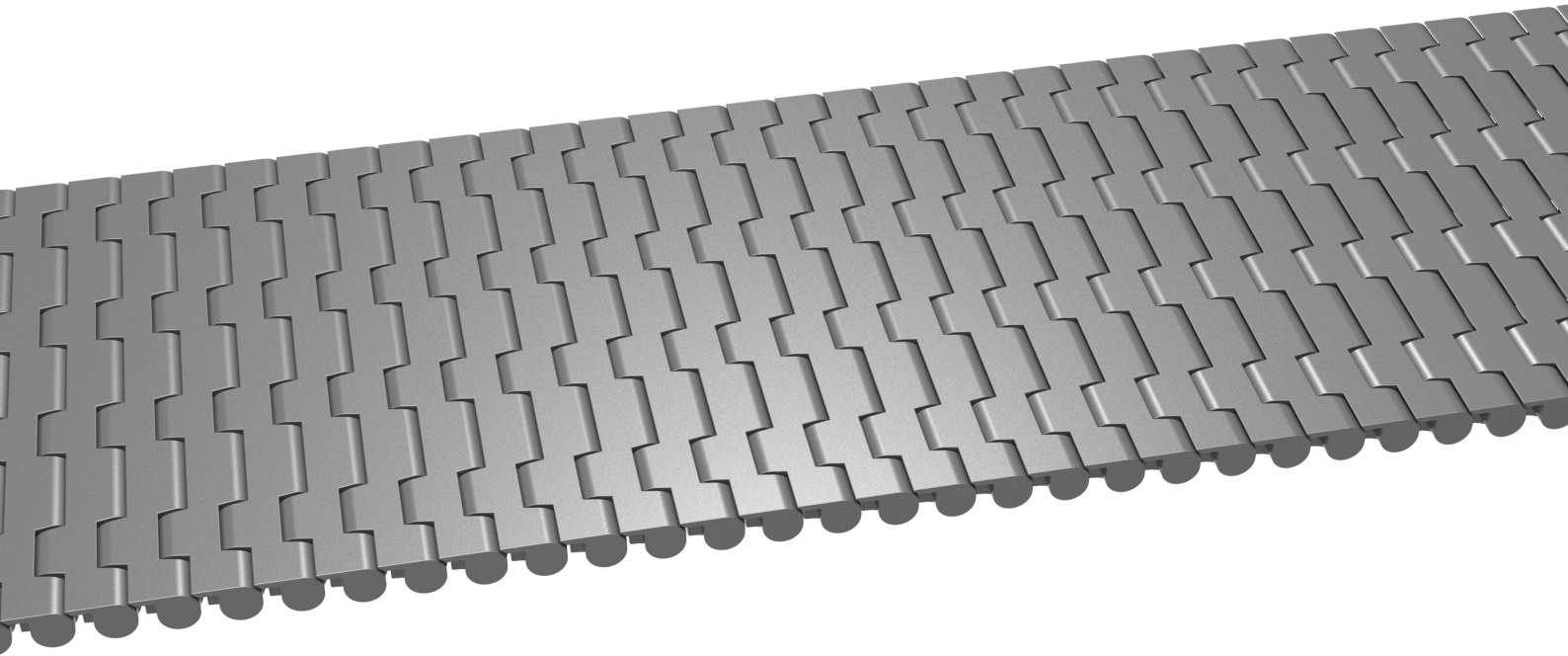
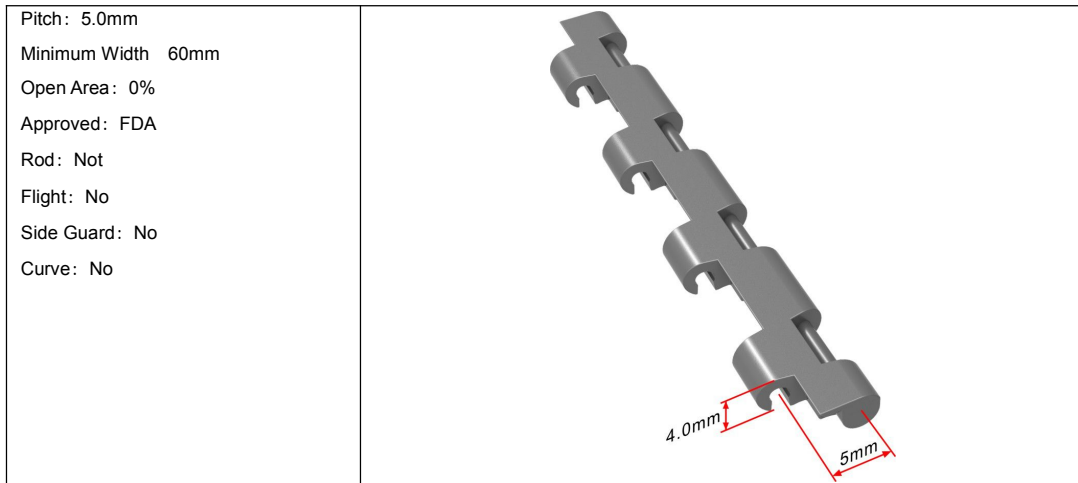


## HS-4000A Technical Data Sheet





**Data**

Belt Material	Belt Strength			Temperature		Belt Weight (Kg/M <sup>2</sup> )
	Straight		Curve	°C (min.)	°C (max.)	
	Kg/M(BW)	N/M(BW)				
Acetal	250	2500	--	-40	80	3.8

**BW – Belt Width**

**Color Table**

Polypropylene					Polyethylene					Acetal					Nylon				
W	G	N	DB	B	W	G	N	DB	B	W	G	N	DB	B	W	G	N	DB	B

W-White, G-Gray, N-Nature, DB-Dark brown, B-Blue

**Friction Table**

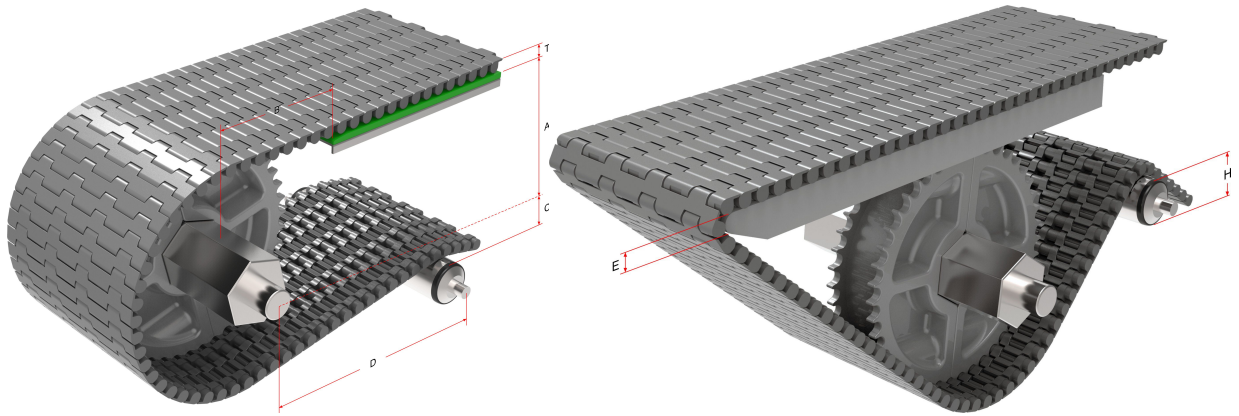
Belt Material	Friction Wear strips & Products							
	UHMW	HDPE	Steel	Glass	SUS	Plastic	Cardboard	Aluminum
Polypropylene	0.32	0.24	0.15	0.09	0.13	0.08	0.15	0.25
Polyethylene	0.13	0.11	0.26	0.19	0.31	0.16	0.21	0.41
Acetal	0.11	0.09	0.27	0.16	0.26	0.15	0.19	0.28
Nylon	0.18	0.13	0.25	0.16	0.26	0.16	0.19	0.27

SUS – Stainless Steel

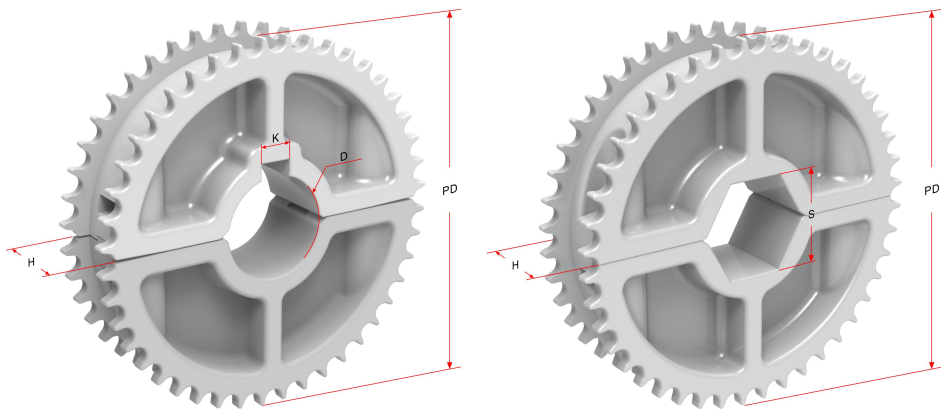
**Equivalent type with other Brand**

Brand Name	Intralox	UNI	Rexnord	MCC	Habasit	KVP
Series & Type						

The above content is only for reference.



<b>Conveyor Frame Dimensions</b>							<b>Unit : mm</b>
<b>No. Teeth</b>	<b>A ( Min.)</b>	<b>B ( Min.)</b>	<b>C ( Max.)</b>	<b>D ( Min.)</b>	<b>E ( Min.)</b>	<b>H ( Min.)</b>	<b>T</b>
<b>44</b>	35	30	37	50	Ø 10	Ø 20	4



<b>Sprocket Dimensions</b>						<b>Unit: mm</b>
<b>No. Teeth</b>	<b>PD</b>	<b>S</b>	<b>D</b>	<b>H</b>	<b>K</b>	
<b>44</b>	70	19	20	17.5	6X6	